



**REGIONAL SPECIALISED METEOROLOGICAL CENTRE-TROPICAL CYCLONES, NEW DELHI
TROPICAL WEATHER OUTLOOK**

DEMS-RSMC TROPICAL CYCLONES NEW DELHI DATED 13.03.2021

TROPICAL WEATHER OUTLOOK FOR NORTH INDIAN OCEAN (THE BAY OF BENGAL AND ARABIAN SEA) VALID FOR NEXT 120 HOURS ISSUED AT 0600 UTC OF 13.03.2021 BASED ON 0300 UTC OF 13.03.2021.

BAY OF BENGAL:

SCATTERED LOW AND MEDIUM CLOUDS WITH EMBEDDED ISOLATED MODERATE TO INTENSE CONVECTION LAY OVER SOUTH PARTS OF SOUTH BAY OF BENGAL & SOUTH ANDAMAN SEA.

PROBABILITY OF CYCLOGENESIS(FORMATION OF DEPRESSION) DURING NEXT 120 HRS:

| 24 HOURS | 24-48 HOURS | 48-72 HOURS | 72-96 HOURS | 96-120 HOURS |
|----------|-------------|-------------|-------------|--------------|
| NIL | NIL | NIL | NIL | NIL |

ARABIAN SEA:

SCATTERED LOW AND MEDIUM CLOUDS WITH EMBEDDED ISOLATED MODERATE TO INTENSE CONVECTION LAY OVER COMORIN & CENTRAL PARTS OF SOUTH ARABIAN SEA.

PROBABILITY OF CYCLOGENESIS(FORMATION OF DEPRESSION) DURING NEXT 120 HRS :

| 24 HOURS | 24-48 HOURS | 48-72 HOURS | 72-96 HOURS | 96-120 HOURS |
|----------|-------------|-------------|-------------|--------------|
| NIL | NIL | NIL | NIL | NIL |

REMARKS: NIL

SAT : INSAT-3D IMG
IMG_TIR1 10.8 um
LIC Mercator

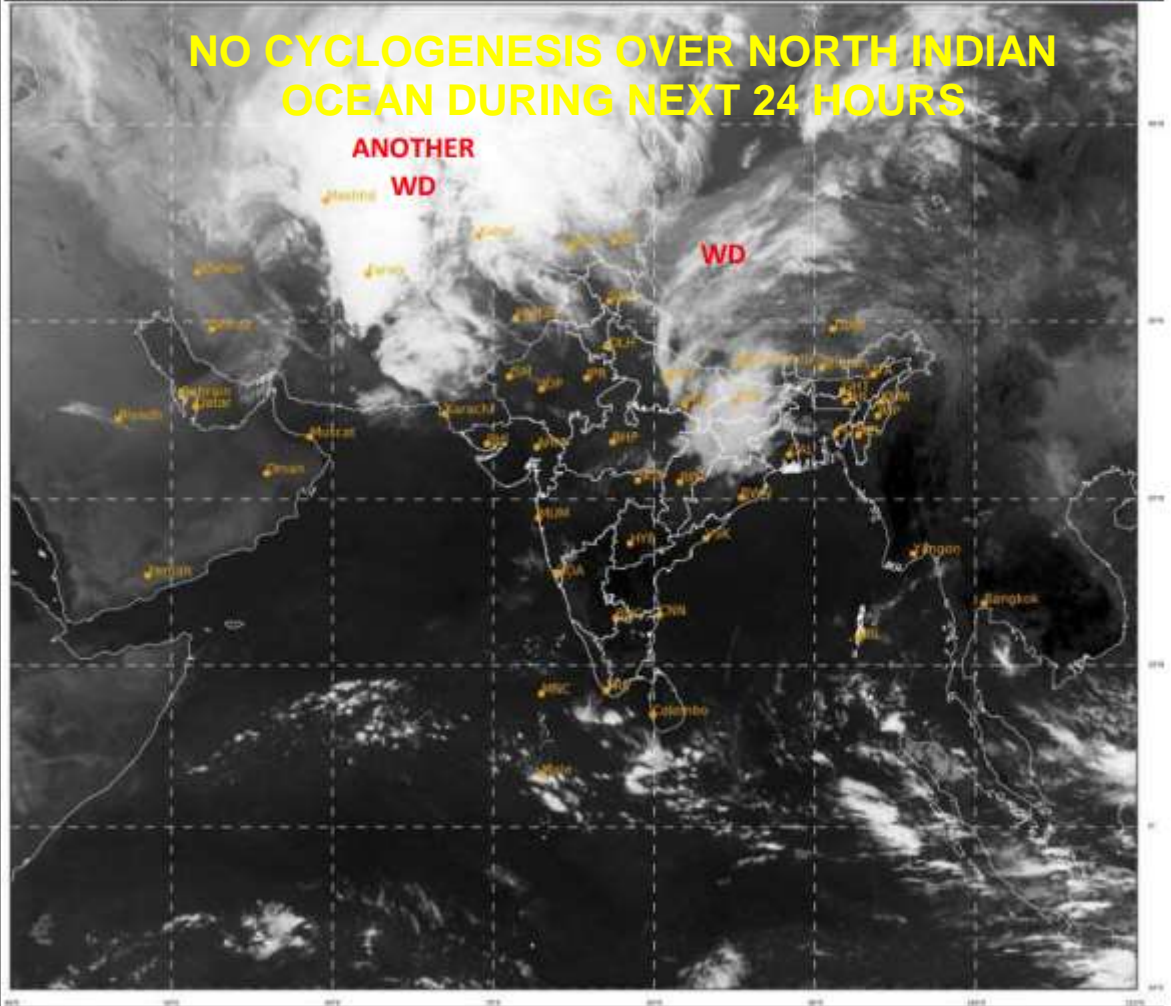
13-03-2021/(0301 to 0327) GMT
13-03-2021/(0831 to 0857) IST



NO CYCLOGENESIS OVER NORTH INDIAN OCEAN DURING NEXT 24 HOURS

ANOTHER
WD

WD



440

920

IMD, DELHI

PROBABILITY OF CYCLOGENESIS (FORMATION OF DEPRESSION):NIL: 0%, LOW: 1-25%, FAIR: 26-50%, MODERATE: 51-75% AND HIGH: 76-100%



This is a guidance Bulletin for the WMO/ESCAP Panel Member countries,. Please visit respective National websites for Country specific Bulletins